



X-ray Single Crystal Orientation System

s-Laue

Demo movie



— Desktop, Easy Measurement —

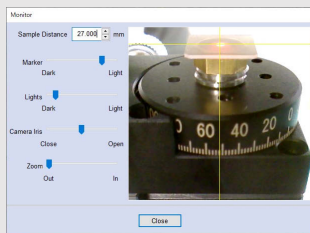
Application / Features

- ◆ Orientation check · Adjustment
- ◆ Crystalline check
- ◆ Air cooling · Compact
- ◆ Easy operation · Fast measurement

Measurement procedure

STEP.1 Sample set

Easy to set sample through CCD Camera

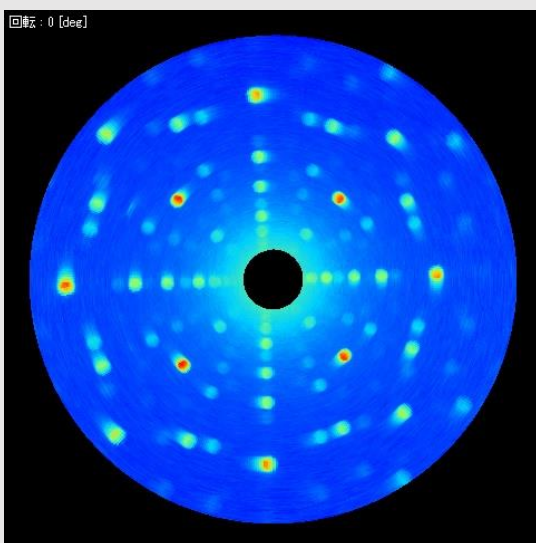


STEP.2

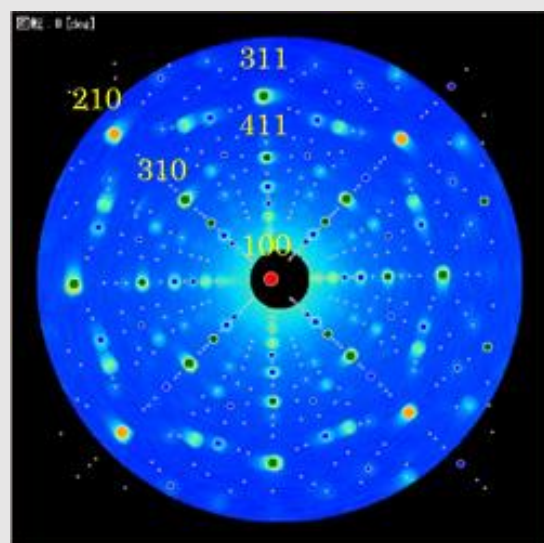
Measurement start

- X-ray irradiation
- Detection

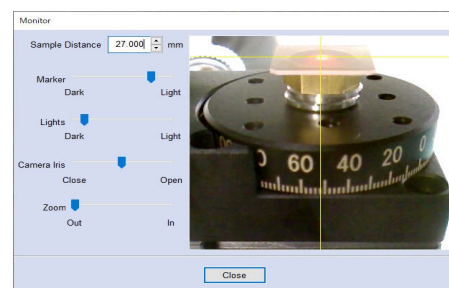
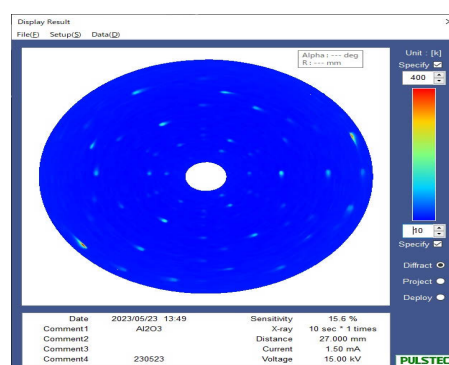
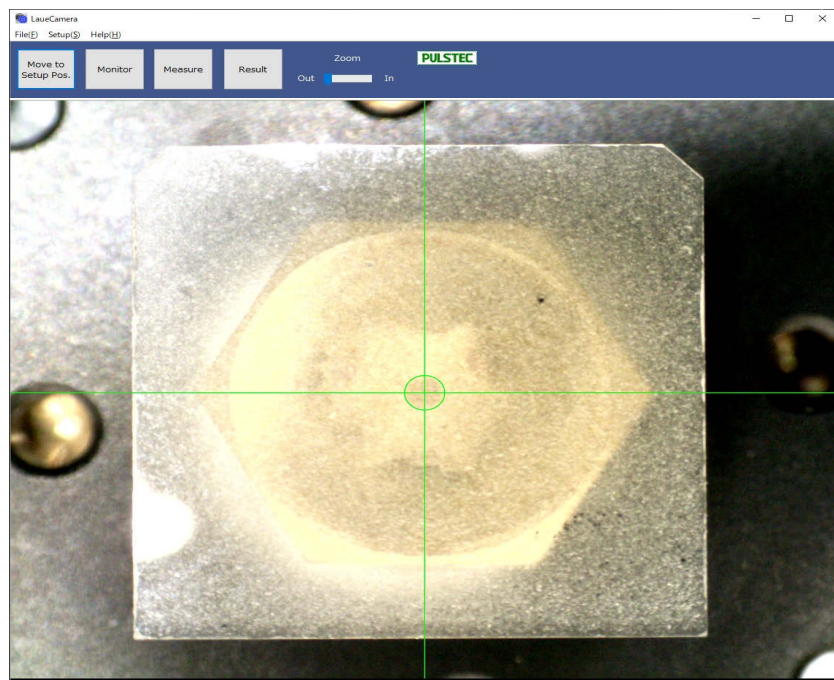
STEP.3 Before fitting



STEP.4 After fitting



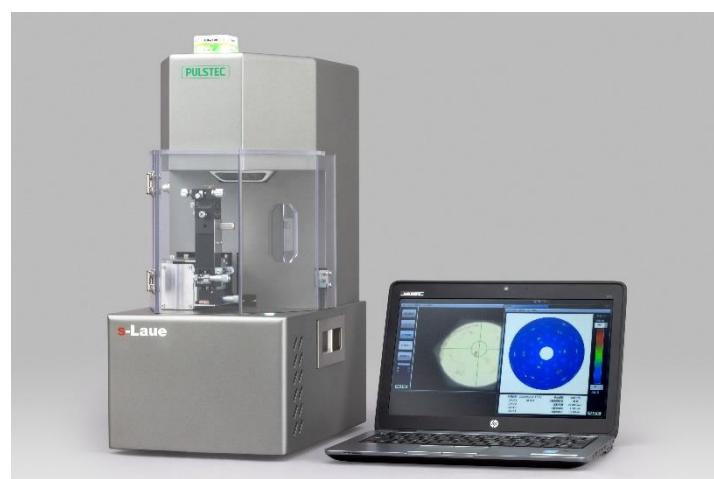
Software · Data display



Specification

X-ray source	W (Tungsten)
Voltage/Current	30kV/1.5mA
Cooling	Air cool
Incident angle	0 degree
Irradiation spot	φ0.8mm (Standard collimator)
Sample distance	27mm
Measurement time	60secs ※Typical
Sample stage	6 axis (Θ/Tan./Rad./X/Y/Z)
Diameter	W224mmD364mmH480mm
Weight	Approx. 24kg
Power	AC100~240V,50/60Hz
Power consumption	150W max
Other	Door Interlock

Configuration



Large sample/On-site measurement

※Please feel free to ask if the sample is large or on-site measurement, such as single crystal turbine blade.
Portable type will be available.